

FOOD SUPPLEMENTS
MADE IN FRANCE

phytēo
laboratoire

by HERBAROM

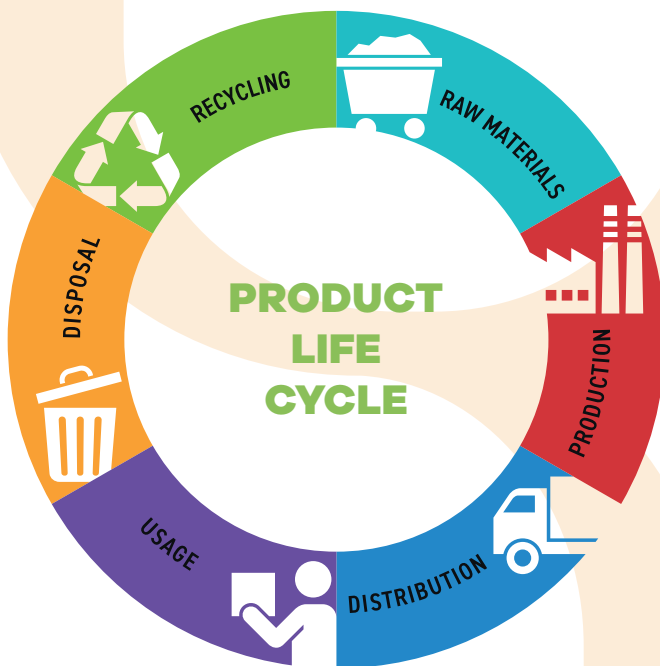
CARBON'PERF

Our Carbon Performance Tool.

REDUCE › REUSE › RECYCLE

Eco-design is a way of **rethinking the entire product life cycle**

- › The ambition is to integrate **environmental protection** from the design phase of goods and services.
- › The aim is to **reduce environmental impact** throughout the product life cycle.



The eco-design approach is a trade-off between :



ECONOMIC COSTS



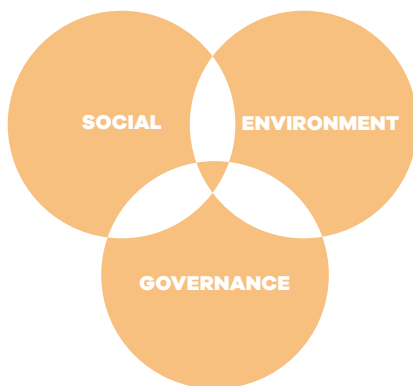
ENVIRONMENT COSTS

Phytéo Laboratoire ESG Approach

AMBITION

- to develop eco-designed to **support the ecological transition**

Since 2021, Phytéo Laboratoire has initiated an ESG approach to involve our employees, our partners and our suppliers to a virtuous approach.



- An approach based on **3 key lever indicators**:

- 1 CARBON FOOTPRINT AND EMISSIONS REDUCTION**
- 2 TRAINING EFFORTS FOR EMPLOYEES**
- 3 WELL-BEING AND SAFETY AT WORK BY OBTAINING GREAT PLACE TO WORK CERTIFICATION**

↓ **-2,5%**
for 5 years
↑ **x2**

- Phytéo Laboratoire has developed a **new tool to measure the carbon impact**: CARBON'PERF

- "White label" products
- Products under development
- Customer products (on-demand)



PHYTÉO +

It can assess the carbon footprint of your products, and identify areas for improvement. Our ambition: to proactively propose winning solutions that combine eco-design and price appeal.



> CARBON'PERF: a strategic lever for product sustainability

Establish the carbon footprint of your products using an internal tool available in real time

- > Based on **data**
- > Translated into **kgCO2 equivalent / kg** and **% by category** (materials, energy, packaging, transport...)

REAL-TIME ENVIRONMENTAL MEASUREMENT TECHNOLOGY

- **Dynamic tracking:** Real-time measurement of carbon footprint expressed in kgCO2e/kg.
- **Analysis by category:** By items, materials, energy, packaging, transport.
- **Product comparison:** Identification of impact differences between references to guide eco-design.

CARBON'PERF APPLICATIONS AND ADDED VALUE

- **Product environmental diagnostics:** Identify products with a high carbon footprint to guide corrective action.
- **CSRD regulatory compliance** (sustainability reporting by major companies) : Meet regulatory requirements on environmental transparency.
- **Customer engagement:** Strengthen customer relations by providing reliable carbon impact data.

+ PHYTÉO

- ✓ Offer product comparisons.
- ✓ Present alternatives for better performance.

VIEW CARBON ANALYSIS RESULTS FOR A CUSTOMER PRODUCT



DETAILED PRODUCT ANALYSIS

Breakdown of emissions (kgCO2e) by item: materials, energy, packaging, transport, end-of-life.



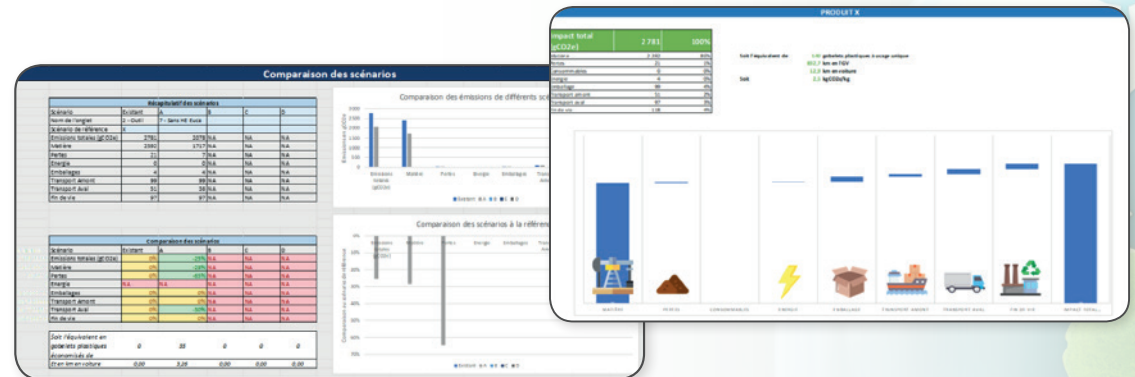
COMPARATIVE SCENARIOS

Evaluation of different logistical or technical scenarios to identify the best options.



VISUAL INDICATORS

Clear graphics and consolidated indicators for immediate understanding by teams or customers.



CONCRETE APPLICATIONS FOR ENVIRONMENTAL PERFORMANCE

Case studies - CARBON'PERF results



MEASURABLE REDUCTION

Up to -25% reduction in the carbon footprint of certain products through eco-design.



INFORMED DECISIONS

Before-and-after comparisons to validate technical and logistical choices.



CUSTOMER FEEDBACK

More transparent product data to strengthen trust and collaboration.

FOOD SUPPLEMENTS
MADE IN FRANCE

phytéo
laboratoire

by HERBAROM



contact@phyteo-laboratoire.com
phyteo-laboratoire.com

— GUARANTY OF QUALITY —



All of our sites are
organic agriculture
certified

— OUR SOLUTIONS —



SCAN ME

